

ASEPT™

The Dispensing
Specialist



LEVER ACTION PUMP

User Manual

Lever Action Pump



Food Pan Pumps

Part#

300136	Lever Action Pump, 10mm, 1/6 pan
300134	Lever Action Pump, 10mm, 1/4 pan
300133	Lever Action Pump, 10mm, 1/3 pan



Bain Marie Pumps

Part#

300135	Lever Action Pump, 10mm, #10 Can
300104	Lever Action Pump, 10mm, 4 Qt
300107	Lever Action Pump, 10mm, 7 Qt
300111	Lever Action Pump, 10mm, 11 Qt

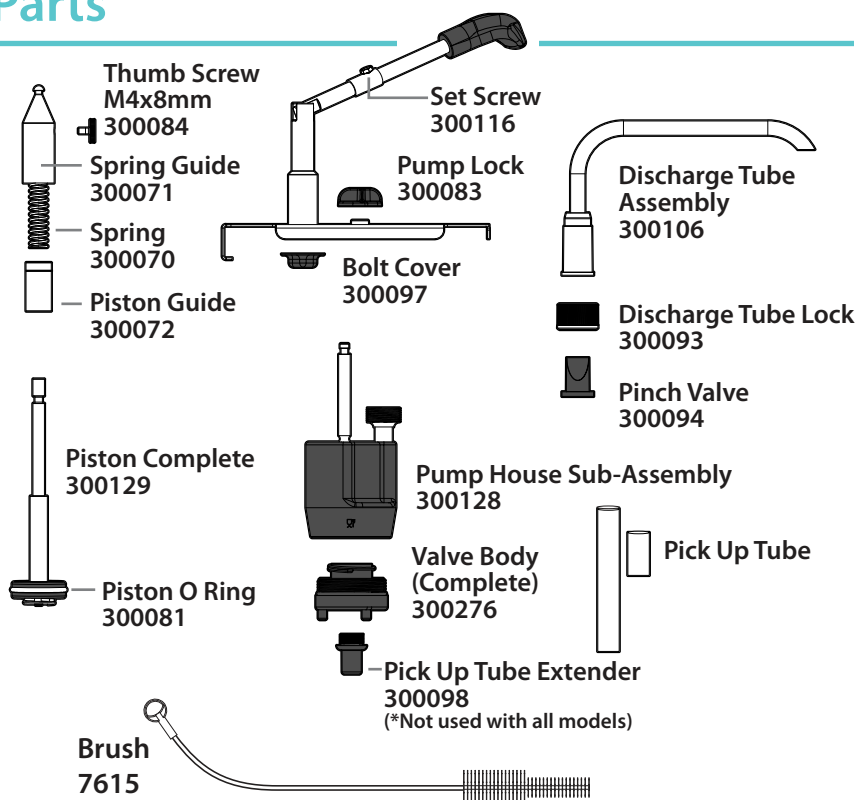


Fountain Jar Pumps

Part#

300130	Lever Action Pump, 10mm, 7" & 10" Fountain Jar
--------	---

Parts



Safety

All components must be cleaned before first use.

According to food and safety regulations, most foods must be stored and/or served at certain temperatures or they could become hazardous. Check with local food and safety regulators for specific guidelines. Be aware of the product you are serving and the temperature the product is required to maintain.

IMPORTANT: Clean, rinse, sanitize, and dry parts at a minimum of every 24 hours. Always comply with local sanitization requirements.



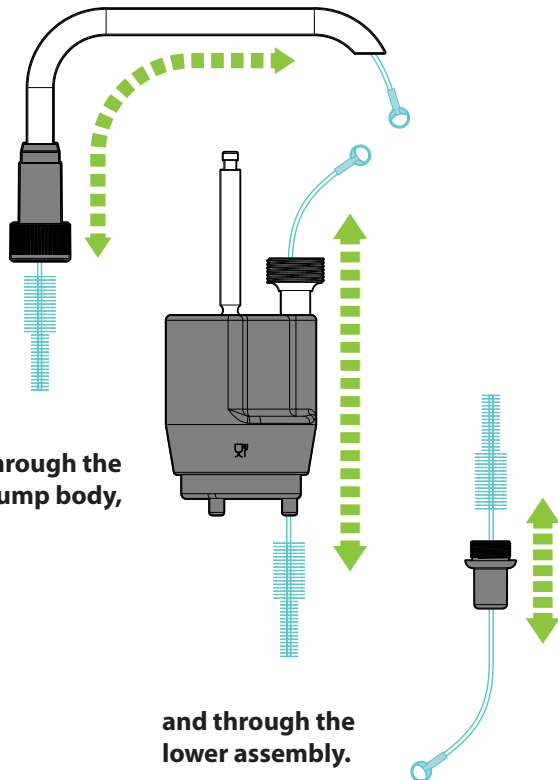
Cleaning

Disassemble all parts. Clean with soap, hot water, and brush. Wash, rinse, sanitize, and dry parts according to local sanitization requirements.

Run the brush
through
the discharge
tube,

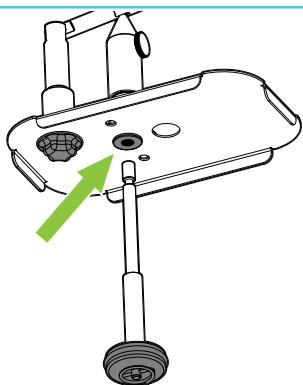
through the
pump body,

and through the
lower assembly.



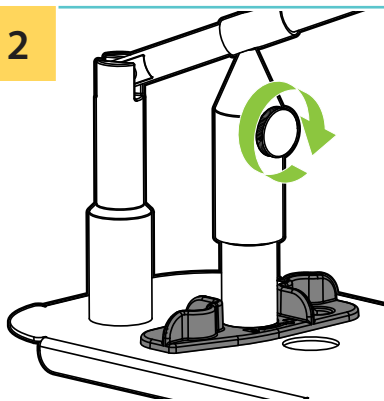
Assembly

1



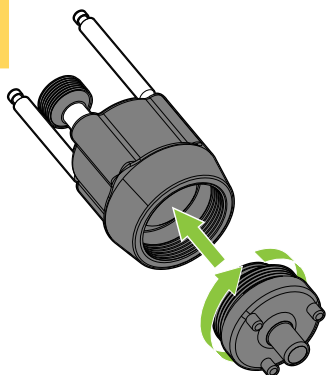
Insert the piston.

2



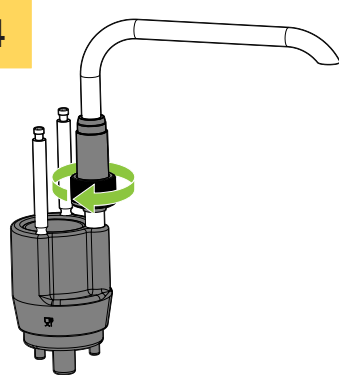
Secure the piston by tightening the thumb screw in the upper piston assembly.

3



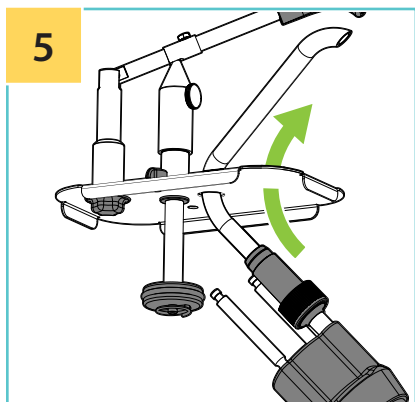
Screw the lower valve assembly into the pump body.

4

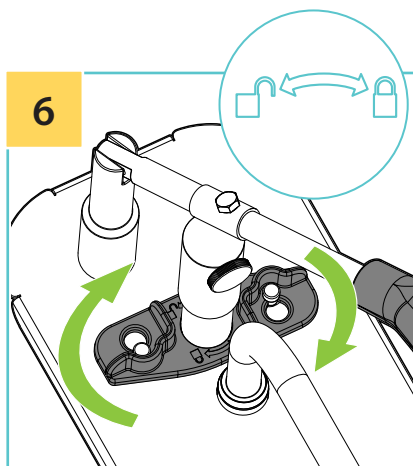


Screw the discharge tube assembly to the pump body.

Make sure valve is in place in the discharge tube.

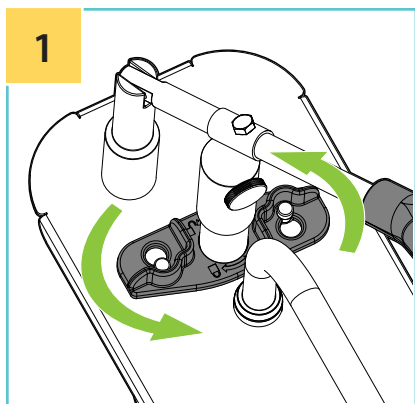


Attach pump body to lid assembly.

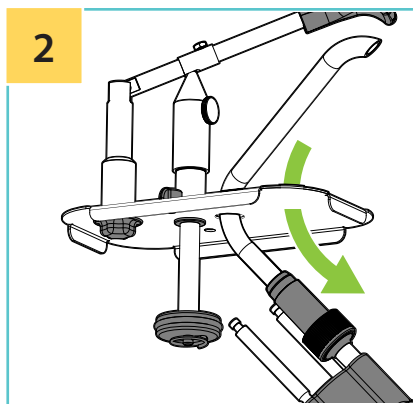


Twist lid lock clockwise to lock Lid.

Disassembly

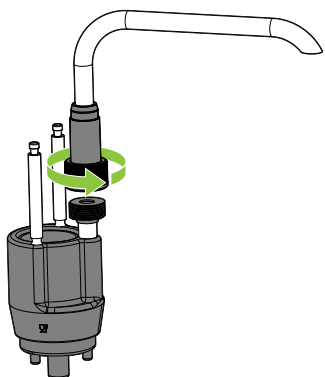


Twist lid lock counter-clockwise to unlock Lid.



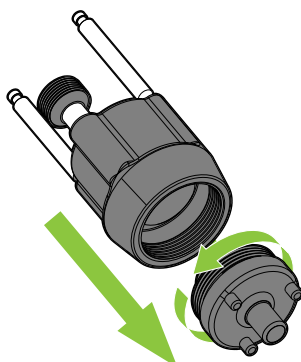
Pull down to separate pump body from lid assembly.

3



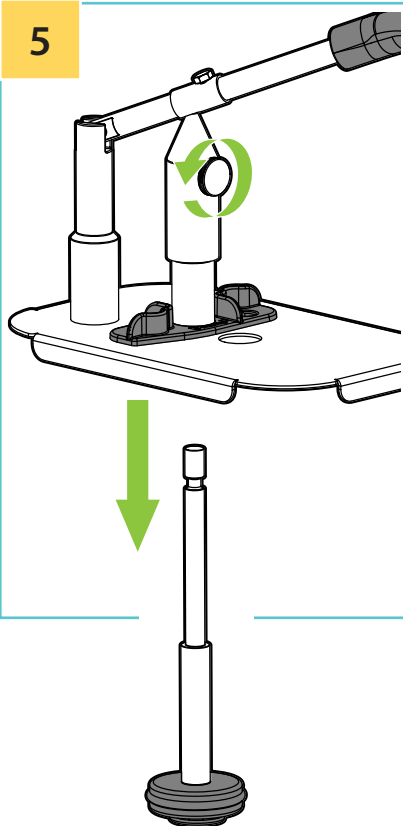
Unscrew the discharge tube assembly from the pump body.

4



Unscrew the lower valve assembly from the pump body.

5



Loosen the thumb screw in the upper piston assembly. Pull the piston through the lid.

Tips & Troubleshooting

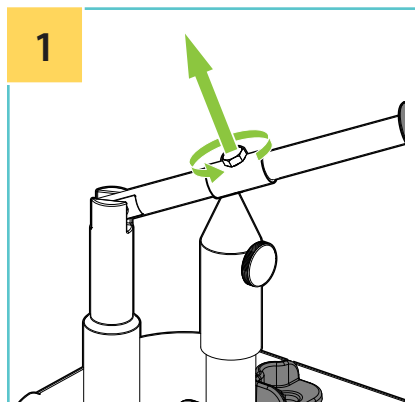
Pump feels loose:

Make sure lid lock is properly engaged.

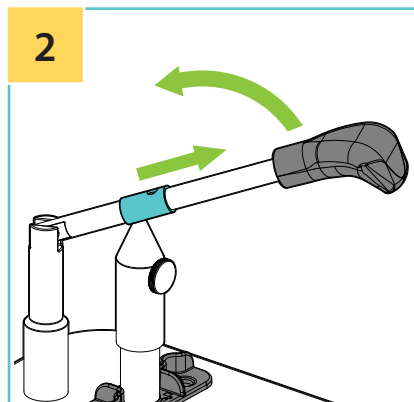
Pump is not dispensing product:

Make sure valve is in place in the discharge tube.

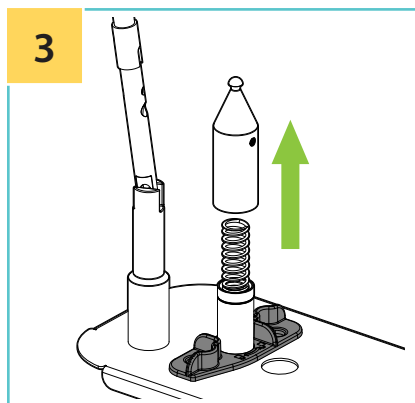
Setting the Portion



BEFORE FULL ASSEMBLY
Remove collar nut.

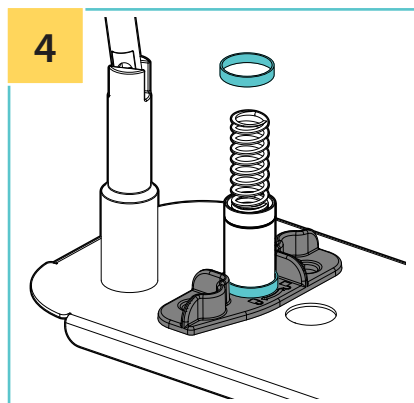


Slide collar up, lift handle clear of
upper piston assembly.



Remove upper piston assembly.

Watch Spring!



Slide portion ring over spring
housing. Reassemble.

NOTE: Each ring reduces portion
by $\frac{1}{4}$ fl oz.

ASEPT General Warranty

Liability for defects

Should the products, as delivered, within one (1) year from delivery be shown to be defective due to defaults in material or manufacturing ("Warranty Period"), the Supplier undertakes, at its own option (i) to make a replacement delivery, (ii) to repair or rework the products claimed to be defective or (iii) to accept return of such product and refund such proportion of the purchase sum received as corresponds to the returned products. The Supplier assumes no liability for defects as regards to layout and design of the products, unless expressly stated in the Agreement.

The Customer shall without undue delay notify the Supplier in writing of any defect which appears. Such notice shall under no circumstances be given later than two (2) weeks after the expiry of the Warranty Period.

The Supplier is liable only for defect which appear under the conditions of operation provided for in the Agreement and under proper use of the product. The Supplier's liability does not cover defect which are caused by faulty maintenance,

incorrect use or faulty repair by the Customer, or by alterations carried out without the Supplier's consent in writing. Finally, the Supplier's liability does not cover normal wear and tear or deterioration.

Except as expressly specified above, the Supplier has no liability for defects in the products whatsoever and are under no circumstances responsible for any direct or indirect losses, damages or costs incurred by the Customer, including consequential damages.

General limitation of liability

Notwithstanding any other limitation of liability mentioned in the Agreement including these Terms and Conditions, the Supplier's liability for damages under the Agreement shall be limited to the insurance compensation that can be obtained in accordance with the Supplier's each valid liability insurance.

Consequential losses

There shall be no liability of either party towards the other party for loss of production, loss of profit, loss of use, loss of contract or for any other consequential or indirect loss whatsoever.

ASEPT

ASEPT International Inc.

5207 N. 125th St.
Butler, WI 53007, USA
888-927-3785
info.us@asept.com

ASEPT International AB

Traktorvägen 17, SE-226 60
Lund, Sweden
+46 46 329 700
info@asept.com

www.asept.com