

ASEPT™

The Dispensing
Specialist



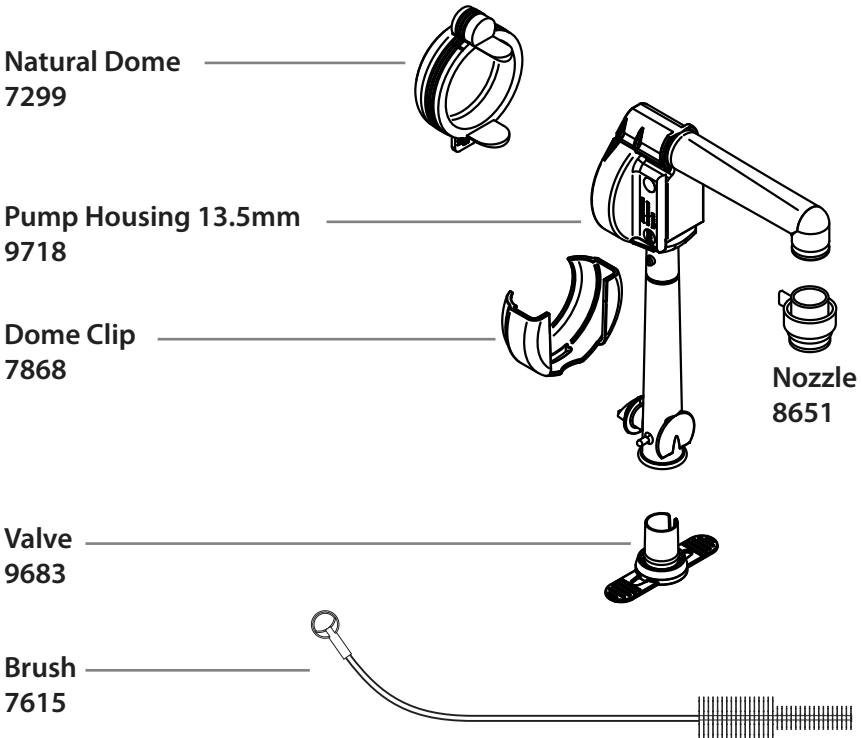
TOUCHLESS UNI DISPENSERS

User Manual

MODEL UNI-2
10975 (ketchup)
10976 (mayonnaise)
10977 (mustard)

UNI Dispensers

Complete Pump 9849



Safety

According to food and safety regulations, most foods must be stored and/or served at certain temperatures or they could become hazardous. Check with local food and safety regulators for specific guidelines. Be aware of the product you are serving and the temperature the product is required to maintain.

Designed for use with standard 1½, 1 or ¾ gallon pouched condiments and toppings.

Pumps attach to 16mm fittings in pouches.



Safety cont.

- Intended for use between 50 -100 degrees Fahrenheit.
- Dispenser must be used on a horizontal surface.
- Dispenser must be installed in a location where it can be overseen by trained personnel.
- Dispenser must be used with provided power supply.
- The dispenser shall not be placed where a water jet could be used for cleaning.
- The appliance is not to be used by persons with reduced physical, sensory or mental capabilities, or lack of experience and knowledge, unless they have been given supervision or instruction.
- Children should be supervised not to play with the appliance.
- Place dispenser away from edge of counter to prevent potential drips from reaching the floor. Wipe off any potential drips as they form.
- Clean pump every 24 hours
- Noise level: <70dB

Pump Cleaning

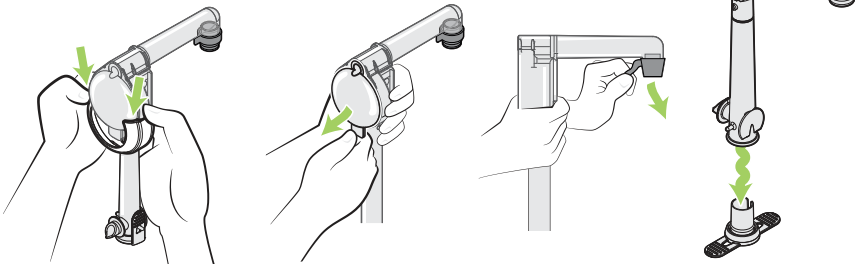
All components must be cleaned before first use.



Disassemble all five (5) parts. Clean with soap and hot water, rinse, sanitize and dry according to local sanitization requirements. Use supplied brush to scrub inside parts.

Do not immerse the lid or power supply when cleaning.

Clean and sanitize exterior of shroud as needed.



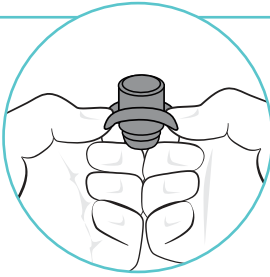
IMPORTANT Clean, rinse, sanitize, and dry parts at a minimum of every 24 hours. Always comply with local sanitization requirements.

All pump components are dishwasher safe.



Assembly

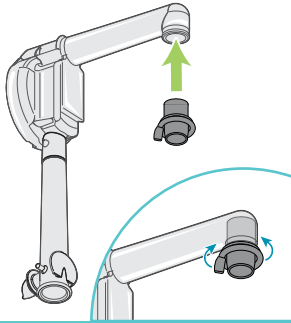
1



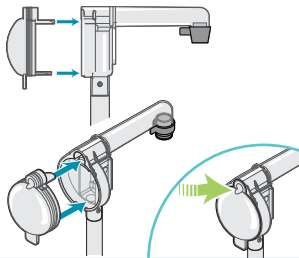
Mount the nozzle

onto the end of the pump housing. Bend the outer portion of the nozzle inside out.

Insert into opening. Tab of nozzle faces towards housing. Flip the outer portion of the nozzle over the end of tube.



2



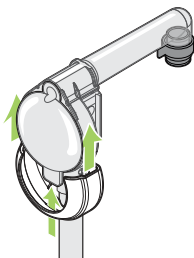
Insert dome

into the pump housing.

Ensure the flaps slide into place.

Press the entire dome firmly, including the top portion.

3

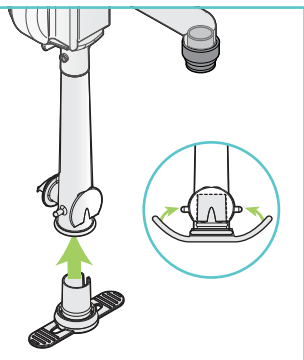


Insert the dome clip

over the dome and pump housing.

Ensure that the tab on bottom of the dome slides into the opening in the dome clip.

4

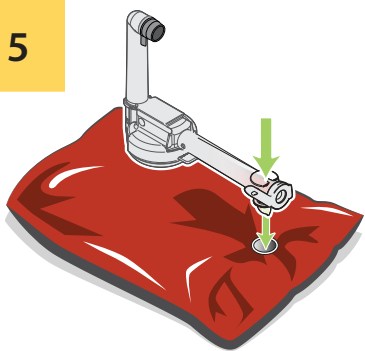


Insert valve

into the bottom of the pump housing. Wrap the flaps on the side of valve onto the pair of pegs on the pump housing.

TIP: Lubricate parts with clean water to ease fitting.

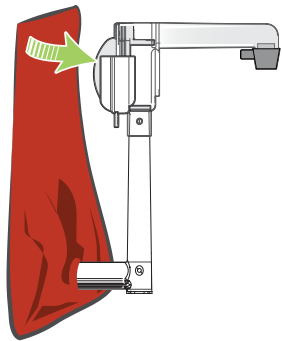
5



Connect pump to pouch

Put new pouch on counter top with fitment facing up. Place piercing end of connector in center of the fitment. Push firmly until pump snaps into place.

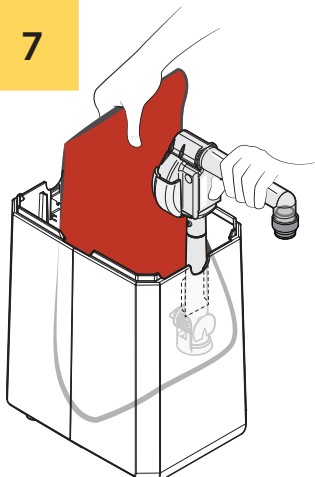
6



Prime the pump

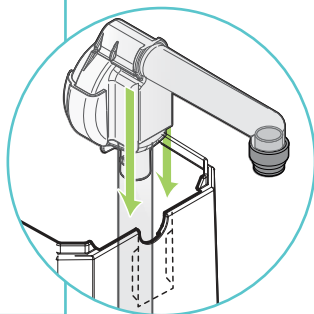
Hold the pump in an upright position. Press the dome with both thumbs and let it recover to starting state. Repeat until product has reached the nozzle.

7

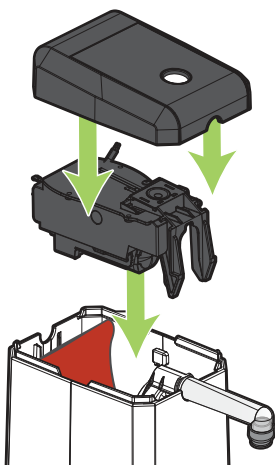


Insert pouch and pump

into the dispenser shroud. Hold end of pouch up while guiding the pump into the slots inside the front of dispenser.



8



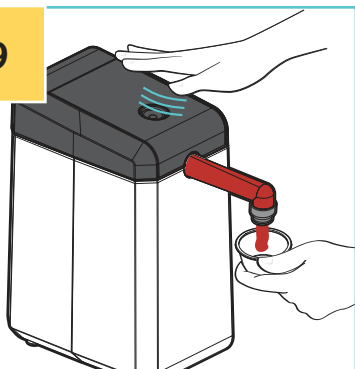
Insert the Dispensing Mechanism

Make sure pump is in place. Slide the dispensing mechanism into the shroud making sure that the unit sits in place correctly.

Insert the Lid

Place the lid over the dispensing mechanism.

9



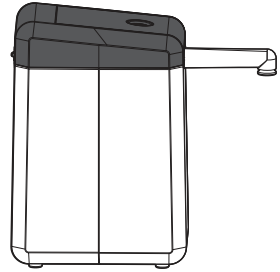
Prime the Pump

Wave hand over sensor to ensure pump is primed and dispensing product.

Tips & Troubleshooting

Product not dispensing?

Make sure dome is primed properly.
Make sure lid is seated properly.
Activate the safety switch.

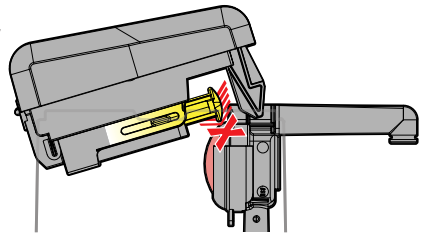


Prevent leaks:

Ensure that dome is pushed fully into pump housing.
Ensure that you hear a CLICK when attaching pump to pouch.

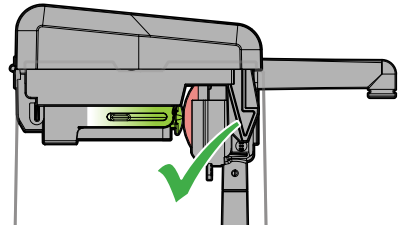
Unable to place the lid on the dispenser?

The dispensing mechanism includes a safety switch that will freeze the actuator in position if the lid is removed in the middle of dispensing.



Reset the actuator:

- 1) Remove the pump and pouch from the dispenser base.
- 2) Install the dispensing mechanism and lid on the empty base.
- 3) Wave your hand over the sensor.
- 4) After the actuator cycles completely, remove the dispensing mechanism and lid, and reinstall the pump and pouch into the dispenser base.
- 5) Reinstall the dispensing mechanism and lid.



Can I change the portion on the Touchless UNI Dispenser?

No, it is preset at $\frac{3}{4}$ fl oz at the factory.

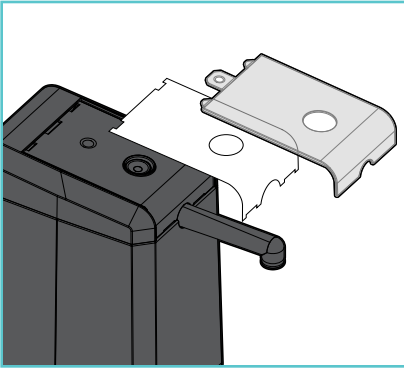
Can I plug the Touchless UNI Dispenser into a power strip?

Yes, each dispenser only draws 2 amps when in use. You can safely plug 7 dispensers into a power strip on a single 15 amp plug and 10 dispensers into a 20 amp plug.

Why doesn't the motor engage when I wave my hand over the sensor?

- 1) The sensor is designed to dispense when your hand is between 1" and 5" above the sensor. If it's too close or too far away, the sensor might not recognize your hand. Try moving your hand up and down on the sensor to see if it triggers.
- 2) Make sure that the power supply is plugged into a working outlet.

Product Label and Cover



Insert Cover Over Product Label

Place product label in slot, making sure to align sensor hole.

Attach the clear cover. Align tab and slot, and slide into place.

ASEPT General Warranty

Liability for defects

Should the products, as delivered, within one (1) year from delivery be shown to be defective due to defaults in material or manufacturing ("Warranty Period"), the Supplier undertakes, at its own option (i) to make a replacement delivery, (ii) to repair or rework the products claimed to be defective or (iii) to accept return of such product and refund such proportion of the purchase sum received as corresponds to the returned products. The Supplier assumes no liability for defects as regards to layout and design of the products, unless expressly stated in the Agreement.

The Customer shall without undue delay notify the Supplier in writing of any defect which appears. Such notice shall under no circumstances be given later than two (2) weeks after the expiry of the Warranty Period.

The Supplier is liable only for defect which appear under the conditions of operation provided for in the Agreement and under

proper use of the product. The Supplier's liability does not cover defect which are caused by faulty maintenance, incorrect erection or faulty repair by the Customer, or by alterations carried out without the Supplier's consent in writing. Finally, the Supplier's liability does not cover normal wear and tear or deterioration.

Except as expressly specified above, the Supplier has no liability for defects in the products whatsoever and are under no circumstances responsible for any direct or indirect losses, damages or costs incurred by the Customer, including consequential damages.

General limitation of liability

Notwithstanding any other limitation of liability mentioned in the Agreement including these Terms and Conditions, the Supplier's liability for damages under the Agreement shall be limited to the insurance compensation that can be obtained in accordance with the Supplier's each valid liability insurance.

Consequential losses

There shall be no liability of either party towards the other party for loss of production, loss of profit, loss of use, loss of contract or for any other consequential or indirect loss whatsoever.

ASEPT

Asept International Inc.

900 Oakmont Ln, Suite 207,
Westmont IL 60559, USA
888-927-3785
info.us@asept.com

Asept International AB

Traktorvägen 17, SE-226 60
Lund, Sweden
+46 46 329 700
info@asept.com

www.asept.com